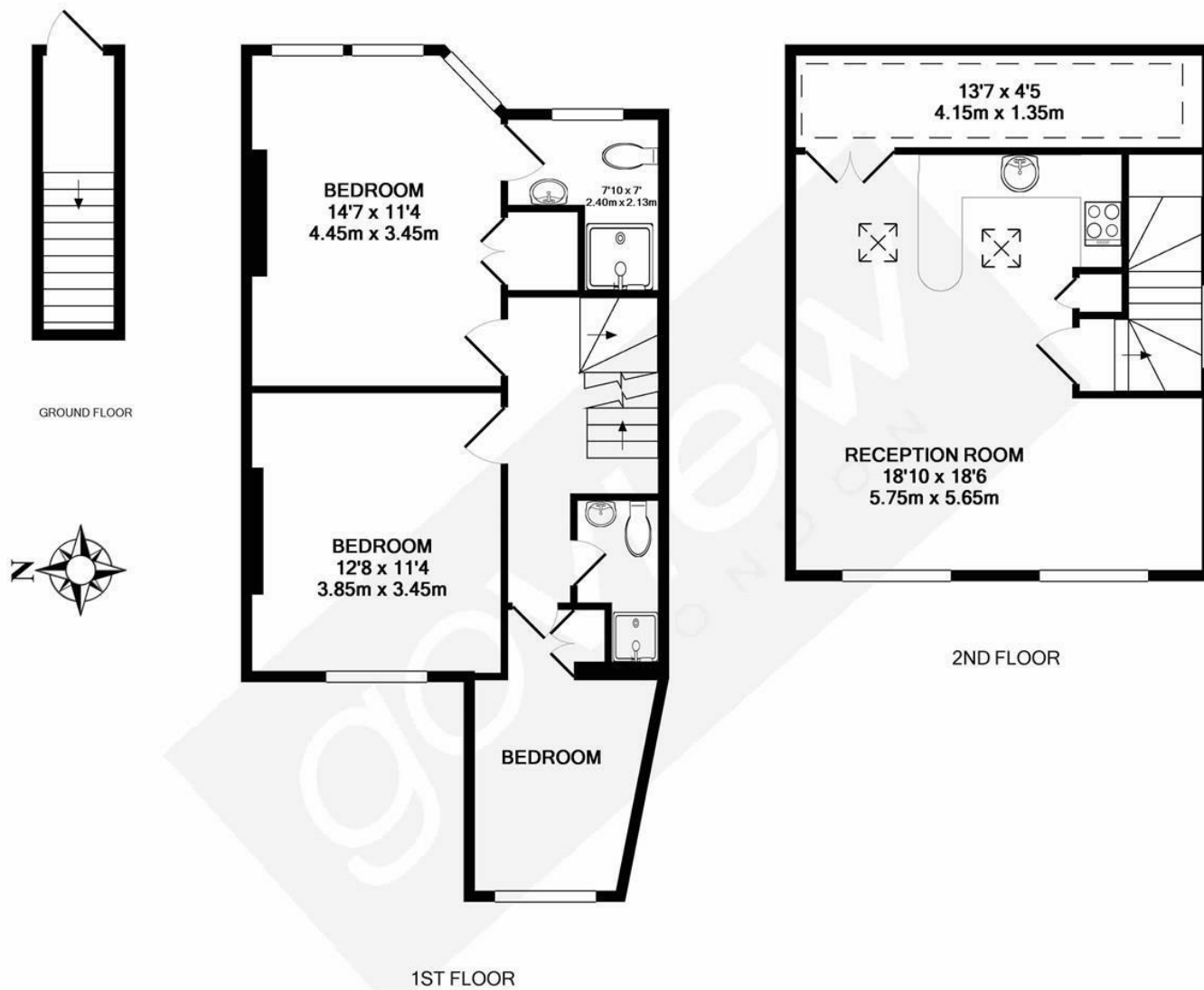


Lexden Road, W3

LONG LET. Excellently located for amenities and transport links this three bedroom duplex flat offers generous living space and high-quality fixtures.

- CLOSE TO LOCAL TRANSPORT
- HIGH SPECIFICATION
- OPEN PLAN KITCHEN
- CLOSE TO AMENITIES
- TWO BATHROOMS
- BRIGHT AND SPACIOUS

£2,300 PCM



Whilst every attempt has been made to ensure the accuracy of the floor plan contained here, measurements of doors, windows, rooms and any other items are approximate and no responsibility is taken for any error, omission, or mis-statement. This plan is for illustrative purposes only and should be used as such by any prospective purchaser. The services, systems and appliances shown have not been tested and no guarantee as to their operability or efficiency can be given
 Made with Metropix ©2017

Energy Efficiency Rating		
	Current	Potential
<i>Very energy efficient - lower running costs</i>		
(92 plus) A		
(81-91) B		
(69-80) C		
(55-68) D		
(39-54) E		
(21-38) F		
(1-20) G		
<i>Not energy efficient - higher running costs</i>		
England & Wales	EU Directive 2002/91/EC	